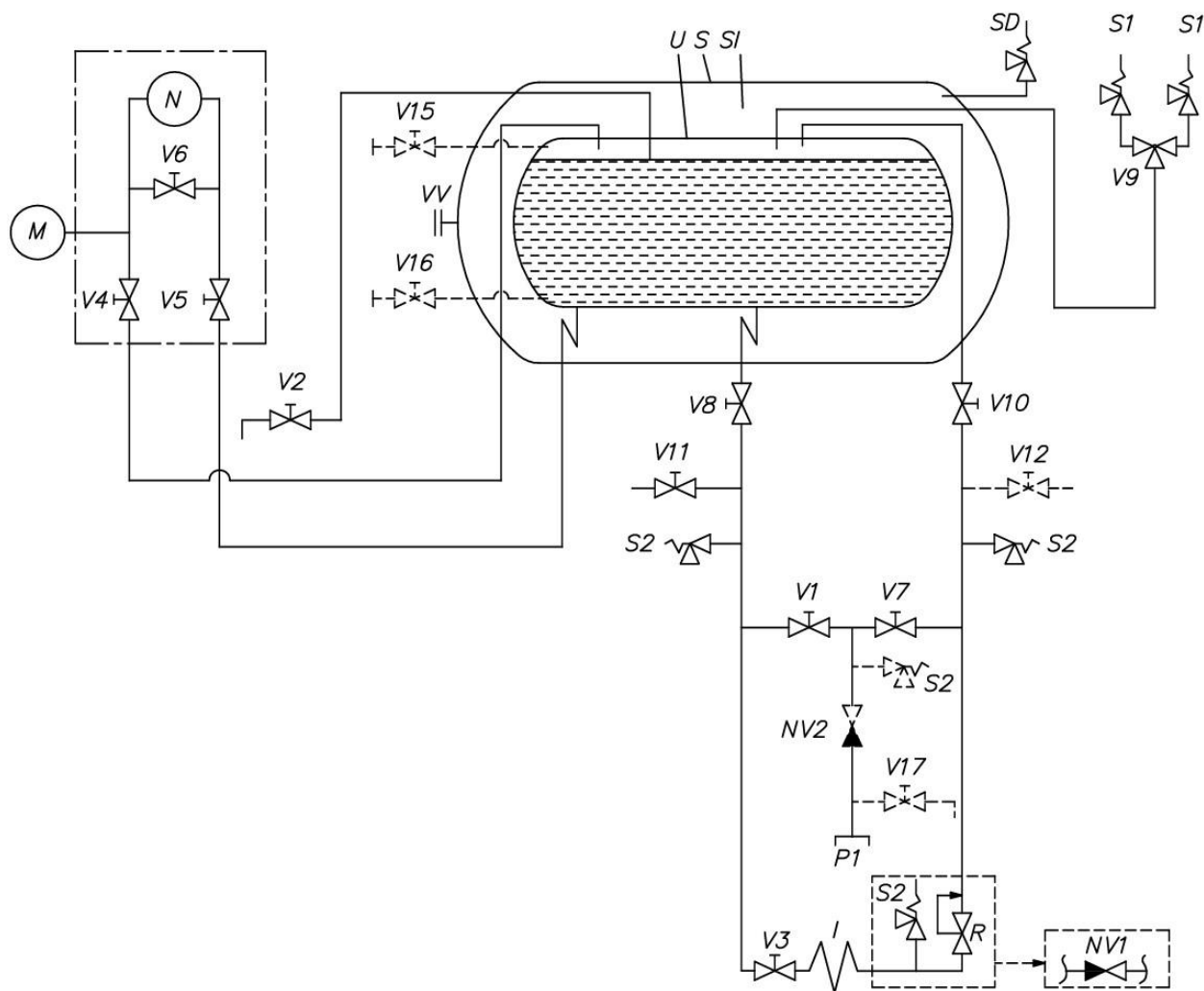


Mobile Horizontal Tanks for LOX, LIN, LAR

Flow Diagram



- | | | | |
|------------|-------------------------------------|------------|----------------------------------|
| V1 | Bottom liquid inlet/outlet valve | V17 | Pressure relief valve (optional) |
| V2 | Overflow valve | VV | Vacuum valve |
| V3 | Pressure build-up valve | I | Pressure build-up vaporizer |
| V4 | Manometer valve/Liquid level(-) | M | Manometer |
| V5 | Liquid level (+) | N | Liquid level indicator |
| V6 | Equalizer valve | NV1 | Check valve (optional) |
| V7 | Top liquid inlet / Gas outlet valve | NV2 | Check valve (optional) |
| V8 | Safety shut off valve | P1 | Filling connection |
| V9 | Three way valve / Diverter valve | R | Pressure regulator (optional) |
| V10 | Safety shut off valve | U | Inner vessel |
| V11 | Pump supply valve | S | Outer jacket |
| V12 | Pump gas return valve (optional) | SI | Multilayer insulation |
| V15 | Gas sample valve (optional) | S1 | Inner vessel safety valves |
| V16 | Liquid sample valve (optional) | S2 | Line safety valves |
| | | SD | Safety disc |