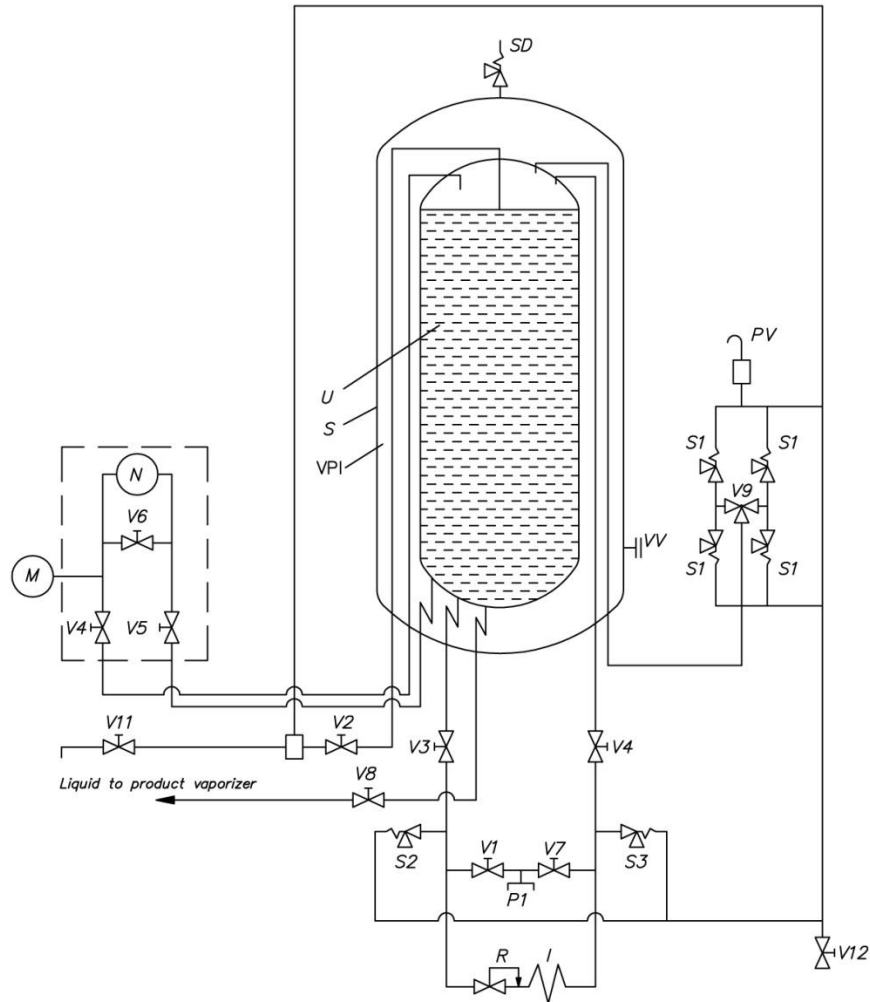


## Vertical Bulk Tank for LNG

### Flow Diagram



<b>V1,V3</b>	Bottom liquid inlet/outlet valve
<b>V2</b>	Overflow valve
<b>V4</b>	Manometer valve/ Liquid level (-)
<b>V5</b>	Liquid level (+)
<b>V6</b>	Equalizer valve
<b>V7,V10</b>	Top liquid inlet/ Gas outlet valve
<b>V8</b>	Liquid gas to product vaporizer valve
<b>V9</b>	Three way valve / Diverter valve
<b>V11,V12</b>	Purge valve
<b>U</b>	Inner vessel
<b>S</b>	Outer jacket

<b>VPI</b>	Vacuum-perlite insulation
<b>S1</b>	Inner vessel safety valve
<b>S2,S3</b>	Line safety valve
<b>SD</b>	Safety disc
<b>VV</b>	Vacuum valve
<b>I</b>	Pressure build-up vaporizer
<b>M</b>	Manometer
<b>N</b>	Liquid level indicator
<b>R</b>	Pressure regulator
<b>P1</b>	Filling connection
<b>PV</b>	Flame trap

